



Community Coordinators' Corner

Linda Folmar and Joan Ivory



Unlike most of you, I was raised in the United Methodist church. I prayed to God and strove to live the teachings of Jesus. When I decided to become Catholic, Mary did not play any major role in my faith life. My first personal experience of her power in my life was during a time when one of my loved ones was in a very dark place. I was so frightened, and I remember sitting alone in the QAC chapel after an evening service. There was such a weight on my heart. A quiet thought arose in my mind. As a mother who had stood faithfully beside her son during his suffering and death, Mary would understand my fear and helplessness. I prayed to her for the first time. I asked her to help me experience her faith and trust that God would be with my child as God had been with her son in all circumstances. I felt peace begin to fill my heart.

Mary is central to the faith life of every Marianist. Her loving presence and unquestioning faith formed Jesus and prepared him for his mission and supported him until it was finished. Her mission is to bring Christ into the world for all time. Mary supports us to continue in this mission. This Advent let us walk in the footsteps of Mary. Let us be the gateway for Christ's coming into this world. Let us be open to God's action in each of our lives. Let us be deeply present to the needs of others. The path to God is not up, but is down into the messiness of this world in order to bring whatever is needed there. During this Holy Season let us pray, BE GOD IN US.

~ Linda Folmar

Queen of Apostles Community
4435 E Patterson Road
Dayton, OH 45430-1033
Phone: (937) 429-0510
www.qac-ohio.org
Inside This Issue

Community Coordinators' Corner	1
Fresh Produce for St Vincent	1
QAC's New Season.....	2
Liturgy News	2
Religious Education News	3
Social Justice Ministry	4
Advent Giving Tree	5
Change and Be Changed	6-7
Through A Mother's Eyes.....	7
QAC Stewardship.....	8
Our Lady of Guadalupe Haiku.....	9
News from Nordmeyer Family.....	9
QAC Christmas Ornament Sale.....	9
December Birthdays	10
Seniors' Corner.....	10
The Reflection Pond.....	11
Update from the Murnane's.....	12-14
QAC Spotlight	15
QACers Small Businesses	16
From the QAC Archives.....	17
QAC Calendar	18

To go to a specific page, click on the page number!

Fresh Produce for St. Vincent Our collection of fresh produce for St. Vincent de Paul will be this Sunday, December 4.

Please be especially generous as our sisters and brothers in need try to make it through the holidays as best they can with increasingly less to get them through. The Apple St. location still lists underwear, socks, bras, blankets, chapsticks, and cough drops as their most needed items, though all clothing, shoes, hygiene products, and bedding/linens are greatly appreciated. At the food donation site, their greatest needs continue to be items for sack lunches (like packs of chips to crackers) and large cans of fruit and vegetables, though all shelf-stable donations are appreciated. You can also view the "Needs List" at <https://stvincentdayton.org/donate-goods/needs-list/> and donate directly via Amazon.

QAC'S NEW SEASON

Our transition work into a new season of QAC is much like the outside landscape right now...it may seem like not a lot is going on, but there's a lot of (seemingly invisible) activity happening to prepare for the new season! A summary of recent activity is in the minutes from the November community meeting.

We (Meghann and Matt Naveau) met with the director of the Marianist Lay Communities of North America last week to get his guidance/suggestions on creating a new type of community. We're coordinating communication with the Society of Mary Province through Fr. Tom to ensure collaboration, and help gain support for our efforts. And, very soon we'll have opportunities for those community members who wish to be more involved to help build the structure of the new community and work on the temporal pieces like where we meet, what our community structure will be, etc.

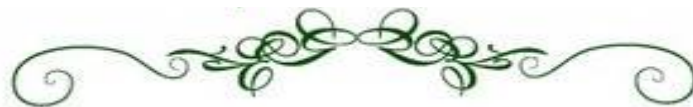
We know it's hard to be patient and allow room for the Spirit to guide us, but we appreciate the coordinated efforts to move together and the trust you've put in us and this process. Please continue to pray for all of us during this transition season. If you have questions or something you really want to help with, please let Meghann or Matt know.



The Naveau Family

Liturgy News

Liturgy Planning - Join us on Sunday, December 4, immediately following Mass in the vestibule to help plan the liturgies of Ordinary Time - February 5, 12, and 19, which will bring us up to Lent (*Ash Wednesday is February 22!*)



Join us for Christmas Eve Mass

December 24, 2022

4:00 PM - beginning with Carols

There will be no liturgy held on Christmas Day



Share your creative works with QAC!

We would love to feature your artwork, writing, photo or other creativity in an upcoming Spirit.

Send your inspiration to gacspirit06@att.net by the 24th of each month.

Religious Education News....



Please keep the QAC Confirmation class in your prayers as they continue to bring the Holy Spirit into their lives.



Confirmation Class of 2023:
Aidan Holcomb, Mia Chesar, Cianna Berry, Gabe Paris and
(teacher) Joan Ivory.

RE Schedule for December and January:

- ◇ December 4 ◇ January 8
- ◇ December 11 ◇ January 15
- ◇ December 18 ◇ January 22

Jesse Tree Project

The Jesse Tree tradition is rooted in Isaiah 11:1: "A shoot shall come out from the stump of Jesse, and a branch shall grow out of his roots." Starting on November 20th, and continuing each Sunday of Advent, the RE classes will gather in Si Lounge to decorate the Jesse Tree. Be sure to stop by and see this tree, so rich in history!!



QAC ADVENT GIVING TREE

by Cathy Adler

Advent is that special Liturgical season when we prepare for the greatest love that God bestowed on us! Anticipating with joy the divine gift that Mary brought forth to us, the Christ child.

We all know the story of Mary and Joseph's forced journey to Bethlehem, a journey of about 90 miles with limited provisions. A young Mary, late in her pregnancy must have been uncomfortable riding a donkey. Food and rest would be scarce too, a difficult trip for them. And housing? Well, a stable had to do, probably arriving later than most to Bethlehem and not able to afford better lodging. The world not yet knowing of the treasured gift that Mary carried within her!

Now 2,000 years later we know Mary's gift, Incarnate Love, that was born in a stable! But Mary and Joseph's story was like so many stories we still hear, the struggles for food, clothing, and decent housing. Now we have been given Mary's gift too, God now among us, a gift not to keep just for ourselves but to share with others. These others are our neighbors who still need warm safe shelter, warm clothing, and bedding, maybe a crib, diapers, and personal care items.

This Advent, who will you share your gift of God's love with? QAC can help with our Advent giving tree. Thanks to Tanya and Eric Groff and their blessed family our Advent tree is up, and the gift tags are on and waiting! Waiting for us to choose a tag(s) from the five charities we can help this year. Waiting for your kindness, maybe to strangers but all children of God. Please see the Giving Tree information on page 5.

SOCIAL JUSTICE MEETING: The next Social Justice meeting will be held on December 4 in Si-Lounge after Mass. The agenda is short, and we look forward to your input on future SJ activities. All are welcome to attend.

ECO-TIP from Social Justice:

Several years ago, we received a gift from a dear, very ecologically-minded friend wrapped in...an old, clean dish towel? Noting our quizzical expressions, she quickly pulled out her iPhone and started quoting facts about the environmental impact of gift wrapping – 227,000 miles of paper, 50,000 trees, 540,000 tons of waste – and that was only adding up numbers from certain countries! Most wrapping paper can't be recycled because of the microplastics in glitter and shiny, heavy, coated paper. Moreover, those microplastics can be ingested by our fellow critters, with an often deadly result. Even environmentally friendly paper can't be recycled if contaminated with tape. Suggestions from environmental groups include gift bags or boxes (and be sure to reuse them!), plain brown kraft paper like that used for mailing, magazine or newspaper pages, tie with string instead of taping (or remove the tape), and fabric.

Remember, Mary just wrapped God's greatest gift in swaddling clothes and laid Him in a manger!



ADVENT GIVING TREE: The Advent Giving Tree is set up in the Chapel Vestibule. Please select an "ornament" to take home and bring back each gift to the Chapel on or before January 1st. It has been well supported for many years and we hope to support those among us with less through this wonderful QAC tradition. The gifts do not need to be wrapped. In the event you receive a request from someone who would like to give that doesn't physically attend church, the list for each charity is posted on the QAC website. Thanks for your generous support and thanks also to Tanya and Eric Groff for organizing this wonderful project!

Good Shepherd Ministries Life Recovery Center

- ◆ Jeans or Khakis - 30 waist x 32 length, 32 waist x 32 length, 34 waist x 32 length
- ◆ T-shirts - S, Med, Large, XL
- ◆ Pots & Pans
- ◆ Work Gloves
- ◆ Laundry Detergent
- ◆ Cleaning supplies - Brooms, Bleach, Vinegar, Rags
- ◆ Toiletries - Deodorant, Shampoo, Toothpaste, Floss, Mouthwash
- ◆ Bedding - Full Sheets, Pillows
- ◆ Religious Wall Items & Bibles
- ◆ Kitchenware - Plates, Silverware, Dishware
- ◆ Dry food - Tuna, Cereal, Hamburger Helper

Hanna's Treasure Chest

- ◆ Twin Sheets
- ◆ Twin Blankets
- ◆ Full, Queen Sheets & Blankets
- ◆ High Chairs
- ◆ Infant Swings
- ◆ Baby Tubs
- ◆ Double Strollers
- ◆ Rattles, Teethers
- ◆ Basketballs, Footballs, Soccer Balls
- ◆ School Supplies

Food for the Journey Project

- ◆ Socks, hats, gloves and scarves of all sizes and types for men, women and children

Malawi Scholarship Program Change and Be Changed

- ◆ Monetary Donations - Make out checks for Change and Be Changed



Thank you for your
support



**ELIZABETH'S
NEW LIFE CENTER**

2022 Wish List

Thank you for your participation in supporting our mission for LIFE! Below are the items we are always in need of to help support our client families.
Please return your UNWRAPPED gifts by January 1, 2023, Thank You!!

- *Gift Cards from Walmart or Amazon
- *100% Cotton Flannel Receiving Blankets/Multi-pack
- *Baby Carrier, Bouncy Seat, Infant Swing, or Activity Gym
- *Newborn Hats/Gerber or Carters Multi Pack
- *Cotton Flannel or Terry Cloth Burp Cloths
- *Multi-pack of Onesies Size 0-3 Months (Colorful)
- *Multi-pack of Infant Socks Size 0-3 Months
- *Dreft or other Baby Laundry Detergent
- *Boppy Nursing Support Pillow
- *Nursing supplies (pads, covers, shields)
- *Cozy Cover (Car Seat Cover)
- *Backpack Style Diaper Bag
- *Baby Healthcare Kit
- *Baby Bath Tub
- *Stroller
- *Wipes
- *Bibs

Church Contact:
Eric Groff
937-903-3081
ericgroff1@gmail.com

ENLC Contact: Lauren Koranek, Development Officer | 937-991-0166 | lkoranek@ElizabethNewLife.org

Giving
Tree



Change and Be Changed (CABC) - Kaseye Project Update

Below is a summary of our activities in Kaseye to give you an impression how our projects are progressing.

During the COVID pandemic, CABC's outreach to Northern Malawi and close-by Southern Tanzania was largely relegated to the virtual realm. Numerous WhatsApp phone calls and messages were exchanged to continue the ongoing projects like the warehouse, the Waiting Mothers' House, the Outpatient Clinic, the Computer Center, the perimeter wall, etc. Thomas' two visits to Kaseye in October and November 2021 and August and September 2022 confirmed the successful continuation of the work inside and around the hospital. Furthermore, AA volunteers from Switzerland and Austria made sure that the fledgling meeting in Chitipa, the small town close to Kaseye, got on solid ground. The virtual meetings at the height of the pandemic in 2020 and 2021, sponsored by a member of AA Lucerne, Switzerland, set the example for future meetings. Already before the pandemic, many people were not able to reach the meeting place due to the long distances they had to travel and the lack of public and private transportation in the area.

Let's first look at the success stories of the efforts of the many - donors, hospital and contracted workers, volunteers and on-site and off-site supervisors - who made the completion of the following projects possible:

1. The warehouse was completed in two phases. Rampant inflation resulted in much higher prices for building materials and transportation. Fundraising challenges delayed the project. In spite of it all, the outside of the warehouse now presents itself in its planned appearance.
2. The plastering and pointing of the perimeter wall around the hospital put the finishing touch on the project, which greatly contributes to keeping unauthorized persons and animals off hospital grounds.
3. The construction of The Waiting Mothers' House, a project financed by a grant of the Beit Trust, reached completion early this year. However, the scantily equipped interior is still in need of help.
4. The storage for infection control (IP) equipment and supplies was completed in 2020. Due to the renovation of the Outpatient Clinic (OP), which did away with several staff offices, some areas of the building are currently used by staff members. The IP storage will be fully dedicated to its planned purpose upon completion of the OP in the near future.
5. The renovation of the Outpatient Clinic is ongoing. Expansion of the OP Clinic is not straight forward. Quite a few rooms in hospital Block I had to be reassigned to other areas of the hospital to make space for the new OP Clinic.
6. Not only did the move of the tailor's shop to the laundry free up space for a post-surgical patient room, but it also allowed for better connection between the tailor and the laundry where defect laundry is sorted and repaired.



Still pending is the completion of the following projects, which is delayed by the rampant annual inflation of over 30%. The northern areas of Malawi were disproportionately affected; lack of commercial construction outlets and high transportation costs are making adherence to budgets worked out prior to the worldwide financial problems outright impossible. We are grateful to several donors who have given us a helping hand in starting the final stages of completing the furnishing of the warehouse, as well as finishing the area around the warehouse. When we get

(Continued on page 7)

(Continued from Kaseye Report - page 6)

some additional support, we can complete the following projects:

1. Shelves and storage bins for:
 - Medical supplies and equipment
 - Cleaning agent and supplies
 - Items of daily use like replacement bulbs, toilet paper, paint, replacement plates, jugs, cups, etc.
 - Food, especially maize, soy, peanuts, oil, sugar, salt, seasonal vegetables, seeds, etc.
2. Work benches for carpentry shop
3. Lockable closets with shelves for tool storage for electricians, plumbers, brick layers, and gardeners

Finally, the new warehouse and the donated containers need to be protected by a wall to prevent vandalism and theft. Also needed are metal sheets covering the spaces between the containers so that large items like wood, car parts, agricultural equipment, etc., can be safely stored.

In conclusion, we would like to express our sincere gratitude for the ongoing support of the remaining projects. After ten years of presence in Kaseye, we are ready to wind down our involvement in construction projects slowly but surely. Joyfully and gratefully, though, we will continue to assist all the volunteers donating their time and talent to Kaseye. Also, CABC's scholarship students in Malawi, Zambia, Tanzania, Canada and the US will be able to complete their degrees to the best of their abilities.

The love, support and encouragement we are experiencing in our outreach work in Kaseye are evident in the lives of many in remote areas of Malawi and surrounding countries.

Warmly,

Elizabeth and Thomas Hangartner



Through A Mother's Eyes ~ by Terri Blanken

After my Mother's passing, I came across a letter that she'd written to me decades ago. In it she shared her perceptions of me from birth. Page after page I saw myself through my mother's eyes.

That year, I wrote separate letters to each of my adult children and my grandson. I used special paper rolled up like a scroll with ribbon and placed them under our Christmas tree. Beginning with the moments they were born, I shared my memories about how I stood in awe at the qualities that made them so unique, so special, so exemplary. I didn't acknowledge their accomplishments. Instead, I spoke to how I saw them as human beings, those things that one doesn't acquire, but just are.

There was a tearful silence as each read and then a 'knowing' expression as they recognized their 'soul self' through their mother's eyes. My hope is that this gift will sustain them when they move through the tapestry of life's struggles. They will always know what precious gifts they were in my life and that they are exactly who God created them to be.

QAC STEWARDSHIP

A Way of Life

Gift of Giving. The Seasons of Advent and Christmas have special memories for me. I love seeing the house decorated; the smell of fresh baked cookies; and especially receiving gifts on Christmas Day. I can remember as a teenager, my first real job was working in a retail store and right after Halloween, the store would start decorating for the holidays, and Christmas music could be heard throughout the store.



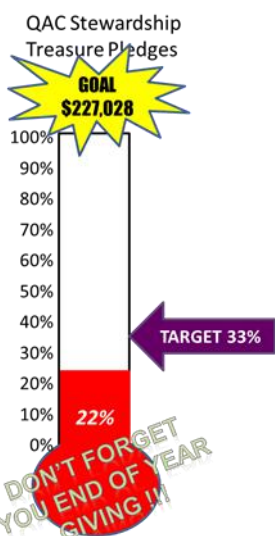
Kevin Skinner

This was also the time when the true meaning of Christmas changed for me. It wasn't that I now could afford to buy gifts for my family, but I was able to help others. My gift from God included kindness and compassion during the stress that the holidays seem to put on us.

"As each one has received a gift, use it to serve one another as good stewards of God's varied grace."
 - 1 Peter 4:10

Stewardship Giving does not buy anything. It does not buy happiness, or love, or a tenfold return on our investment. Also, the way we give our gift is as important as the gift itself. A stewardship gift has no strings attached. It is given freely, as God has given to us, because the motive for the giving is a grateful response rather than expected return.

So how much am I expected to give? The real question is, "How much do we want to give?" since our faith response comes from the heart.



QAC FINANCIAL SUMMARY - OCTOBER, 2022			
	Monthly	Year to Date	Year to Date (Budget)
Collections	\$ 9,240	\$ 49,382	\$ 75,677
Other Income	\$ 925	\$ 2,526	
Total Operating Income	\$ 10,165	\$ 51,908	
Operating Expense	\$ 16,543	\$ 69,844	
Income Expense	\$ (6,378)	\$(17,936)	
Thank you for your generosity!			

*This scale shows our weekly offering (Sunday collections) and our planned budget (target) for the 2022/2023 fiscal year, which started July 1, 2022. Please remember that 10% our weekly offering goes to our Social Justice Ministry.
 Thank you for your support!*

For those unable to attend Sunday Liturgy, please don't forget that we still need your financial support. Please mail in your weekly donations (address on front cover) or better yet, set up Online giving.

View the instructions to setting up online giving at
<http://www.youtube.com/watch?v=dRMfgKncvhM&feature=youtu.be>

CORRECTION IN VIDEO—QAC Zip Code was changed, so please disregard the last four of the zip code

*May the Father, the Son and the Holy Spirit be glorified in all places
 through the Immaculate Virgin Mary*
Marianist Doxology



Follow us on our Facebook page at www.facebook.com/Queen-of-Apostles-Community-117192511632358/

Our Lady of Guadalupe

Haiku by Chris Bohmer Stewart

*Imprint your love in our hearts.
Let compassion bloom like roses in snow
Her appearances were in early December, as you likely already know...*



Exciting news from Steve and Lisa Nordmeyer...

Our daughter Jackie and Sam Blike got married at the Cincinnati Nature Center on August 13 of this year. They met while both attending the University of Cincinnati. Sam is a mechanical engineer and works for GE. Jackie is now a nurse supervisor at University Hospital in Cincinnati.

Our daughter Elisa works for the Red Cross in Columbus as a Regional Manager for Disaster Relief. She got engaged to Tyler Tavalero in May and they are planning a 2024 wedding. Tyler has an Electronics Engineering degree from University of Cincinnati and works for Bath and Body Works.



QAC Christmas Ornament Sale!

Special QAC themed ornaments designed by QAC kids from over 20 years ago will be available the first two Sundays in December. We held an archeological dig in the chapel's undercroft and found these one-of-a-kind dated ornaments. You CANNOT find in stores. These are keepsake quality glass ornaments. We are selling them at a deep discount from their original prices – 60% off!!! These are limited in number and once we sell out – you will NEVER be able to find replacements. See Steve Guilfoos after liturgy in the vestibule.





December Birthdays



Happy Birthday to...

- 2 JOE ANDREWS
- 2 ANNE STALLKAMP
- 3 CHALSI CAMPBELL
- 3 MEGHANN NAVEAU
- 9 CAROL QUINONES
- 11 REBECCA CHERRY
- 14 MARY LOU KRAMER
- 17 DREW NANDA
- 18 MIA CHESAR
- 19 SUE BITSKO
- 19 BARRY RICE
- 19 NANCY WOESTE
- 21 MARY BANE
- 21 PAT WEISSGARBER
- 29 TYLER CAMPBELL

Blessings to all those celebrating a Birthday this month!

Our prayers are offered on your birthday that God will bless you with infinite peace, love, prosperity and happiness.

Please let us know if we missed your birthday! And if we did, we sincerely apologize!

Oops...we missed a birthday announcement in November...

Happy Belated Birthday
Chris Bohmer Stewart - November 23



Seniors' Corner

by Chuck Bauer

December and the holiday season is upon us. Ruby and I have several special rituals during the Christmas Season.

We always go driving around the area to observe the Christmas Lights. When Ruby's mom was with us, she really enjoyed our annual adventure. Last year we went to Caesar Ford, Greene County Park, which is about 5 miles east of Xenia (*Main St (Old 35) E through Xenia, SE on Jasper Rd 5 miles, N on Springtown Rd ¼ mile to the park.*) We also go to several plats in Beavercreek using our Garmin GPS for easy travel through the larger plats: *In Beavercreek - Beaver Valley Rd / Hunters Ridge is a large younger plat. Grange Hall Rd / Summerfield Dr is a very good extensive mix. Patterson Rd just east of QAC, is smaller but very nice. E Dayton Xenia Rd / Brewster Dr has extensive street luminaries.*

Christmas is not complete without Scrooge who is visited by three spirits and eventually gives in. There are three computer streaming choices of this timeless classic - search DuckDuckGo, Bing, never Google "New Castle after Dark presents A Christmas Carol (1984) HD" best quality, or "Scrooge (1935) Dickens Christmas Classic" B&W classic, or "A Christmas Carol The Musical 2004 Youtube" a pleasant change.

I located two Christmas Concerts:

Wright State Combined Choirs Holiday Concerts: (very well attended, need to be there 20-30 minutes early).

- Friday Dec 2: 7:00PM, Lutheran Church of Our Savior, 155 Thurston Dr in Oakwood
- Saturday Dec 3: 7:00PM, Schuster Hall, Performing Arts Center, across from Festival Playhouse WSU

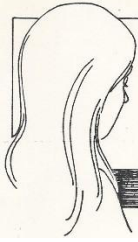
Kettering Civic Band Holiday Concert:

- Monday Dec 12: 7:00PM Kettering Middle School auditorium, 3000 Glengarry Drive, just west of the Greene Shopping Center. The lineup includes a variety of concert pieces, including several holiday pieces. Let's meet (Dec 12) at Panera Bread at the Greene for a light supper at 5:00PM then go to the concert.

(If anyone knows of others, please tell me for posting)

If Ohio State ends up in the Rose Bowl or a New Year's Day bowl game, let's get together in Si Lounge for the game and food, and start the New Year off with good fellowship. Watch the bulletin for details!

Have a Great Christmas, Stay, Happy, Healthy and Strong.



THE REFLECTION POND

By Steve Guilfoos

The Christmas Tree



*Yet
again
another
year has passed
and it's time to
find our Christmas
Tree . . . every year it
seems to be a repetitive
useless task . . . the needles
are sharp and hurting my hands
. . . without constant care, the
needles turn brown and fall . . .
surely there must be a better symbol
for the Christmas season . . . then Mary
explained with a smile, "God made the
Christmas Tree as His gift to you . . . it's always
green because He's always there . . . the sharpness
of the needles are to remind you of the
challenges of the real world . . . hunger . . . thirst
. . . sadness . . . and the lack of trust . . . without your
constant care, His gift of the Tree will wither and die . . .
the Christmas Tree is God's gift of opportunity to you . . .
. . . what you do with His gift . . .
is your
gift to
Him*

Update from the Murnanes...

Up until this point in my life, every time I've asked, or heard, the question, "What do you want to be when you grow up?" I've expected responses centered around careers. A police officer, a pilot, a civil engineer, a doctor; these are the types of answers I'd come to expect. But the front-page story of this week's edition of the Marshall Islands Journal (<https://marshallislandsjournal.com/?s=50-i-years-i-left>) (pictured below) forces me to change expectations. From this point on, I will need to include expectations of answers concerning where children will be living and what nationality they hope to be in addition to Marshallese. This week at the global climate summit, COP27, being held in Egypt, the Marshallese delegation made the point, "Our seat of government and the core of our economic activities, our medical, education and other essential services, our businesses, our homes, our gardens, our families, our pets – all of it will need to be relocated."

RMI on 50-year clock

By Journal on November 17, 2022

50 year, 50 years, 6.6 feet, Clarence Samuel, climate change, COP27, Egypt, global climate summit, John Silk, Kathy Jetnil-Kijiner, Majuro Ebeye, Sea Level Rise

News



The Marshall Islands delegation to the global climate summit COP27 in Egypt this past week released the "RMI Statement of Intent on Adaptation" — which underscores the emerging climate reality that in the lifetime of today's elementary age population, much of the Marshall Islands may become uninhabitable. Marshall Islands delegates to COP27 are telling the [...]

Over the years, Linda and I have lived in several places that a boy from Galloway, Ohio would never expect. For perspective, by the time I graduated from the Ohio State University, I had been to West Virginia twice, drove to Maryland for my oldest brother's wedding, and flown to Boston to attend the convention of fruit and vegetable growers. Yesterday, Linda and I made the 34 mile drive from Laura, at one end of the paved road on the Majuro Atoll, to Rita, on the other end (including a portion that had no paved road). Here is a little background and some of the things that struck us.

According to the Association of State and Territorial Dental Directors, the Republic of the Marshall Islands (RMI) ethnicity is predominantly Micronesian, and the languages spoken are Marshallese and English. The literacy rate is 93.7%. With a 36% unemployment rate in the Republic's most densely populated island, and a gross domestic product (GDP) of about \$3,400 per capita, about 80% of RMI is considered to be below poverty level. The hourly minimum wage is \$3 an hour, but some employers prefer not to pay it and instead pay their workers \$1.50 per hour. (<https://www.astdd.org/territorial-and-jurisdiction-oral-health-programs-republic-of-the-marshall-islands#:~:text=The%20RMI%20ethnicity%20is%20predomina ntly,R MI%20is%20below%20poverty%20level.>)

(Continued on page 13)

(Continued from page 12)

Housing varies – there are some very nice houses like the one we live in and others



And there are less attractive properties too



There is no provision for land to be sold. Land belongs to the family and is a part of each individual's identity. In order to build a house, the owning family member must give permission and the person intending to build is, under normal circumstances, affiliated with the family in some matrilineal or patrilineal way. In some of the outer islands, for you to be allowed to set foot on the island, you must have the owning family member's permission. Here are some of the signs I saw on a walk through our neighborhood announcing each family's plot or weto.

Linda's drive to work is 14.7 miles but often takes an hour each direction. The speed limit is 25 mph and 15 in school zones. Speed is also controlled using a series of speed bumps. There are often children playing in or near the road—especially dangerous after sunset as few people seem to wear light colors. Drivers also frequently encounter, dogs, chickens and pigs in the road.



(Continued on page 14)

(Continued from page 13)

There are trees bearing bananas, coconuts, date palms and a couple I'd never seen before – bread fruit and pandanus.

Breadfruit trees get up to 40 to 60 ft high



Pandanus Tree

Pictures to the right were taken at the College of the Marshall Islands campus. The College of the Marshall Islands has two separate campus locations on Majuro, the Atoll where we are residing. I don't recall having seen a sign anywhere on The Ohio State University warning me to "Beware of Falling Coconuts."



The copra processing plant where dried sections of coconut meat, the kernal of the fruit, are pressed for coconut oil with the by-product of coconut-oil cake which is mostly livestock feed.



Evidence the beach at Laura is receding.

QAC Spotlight



Pictures from the Wetlands Presentation held on Sunday, November 6



***Pictures of the kitchen crew who helped clean up and set up for the reception following Carol Volk's Celebration of Life in Si Lounge
Thank You!!***



The Crazy Crafter - by Terri Blanken



I began designing cards to send to QAC members years ago. Now, Shari (*bless her heart*) McKenny took on this task and sends beautiful cards that she designs. Making cards are my passion! As some have asked, I sell my cards through my 'group' on Face Book called "**In The Moment Designs**". New designs each week.



If interested in my "**Make It and Take It**" classes using distressed ink and alcohol ink methods, contact me at terriblanken723@gmail.com 15% of the cost is donated to St. Jude's Hospital.



**Puzzles Plus is owned and operated by QACers Steve and Lisa Nordmeyer.
Stop in and check out their amazing puzzles and games!!**

Fun Puzzle Books

Hundreds of Jigsaw Puzzles



PUZZLES PLUS

Baffling Brain Teasers

Great Variety of Games

2 Beaver Creek Locations!

1273 N. Fairfield Rd Tue-Sat 10am-5pm

The Greene
110 Plum St

Mon-Sat 10am-9pm
Sun 12pm-6pm


QAC Family always gets 20% off!

From the QAC Archives...

The first two articles appeared in *The Spirit of QAC*, July 1985. "The Joys of Being an Editor" truly resonates with how your current editors feel. "Challenges-Past, Present, Future" speaks to what we are currently experiencing as a community. Wow!!! The Spirit is always with us!!!

Marilyn Nagle submitted the memories of the Lauer's shown at the bottom of this page.

The Joys of Being an Editor



It doesn't seem possible that a whole year has passed since I became editor of the "Spirit" I must say I've thoroughly enjoyed the job. The cooperation I've received from the Community's coordinators and members who have contributed articles and artwork has been gratifying. I owe a very special thank you to Mel Kerr as my good-right-hand in getting the "Spirit" completed and to the printer by deadline, and to Lois & Don Bigler who do a yeoman's job of labeling and mailing every month to be sure you receive your copy as early as possible.

Again I'd like to remind all Community members that this is your newsletter - we need your input and contributions to keep the "Spirit" alive and growing. If there is any article or statement of personal opinion or artwork you'd like to share with the Community, the "Spirit" is the vehicle to use.

Thanks to all of you for making this job a fun job and be sure to "keep those cards and letters coming, folks!"

Challenges - Past, Present, Future

Queen of Apostles Community is built on meeting the needs of a faith community that happened. It was not preplanned. The Society of Mary in its hospitality welcomed people of faith, who found a sense of community in the Eucharistic celebration that the Marianists were willing to share. Those were our beginnings. Truly a gift we happened upon as individuals, which was then offered to us as community to develop and grow in our own hands, with the help of the Marianists and a lot of grace from our God. It has not always been easy. Just as life is - we had pain to experience and joy to enhance us, mixed in with a lot of the ordinary. We have been a challenge to others, and we have been challenged.

The future will always hold new challenges for us. We need the present to reflect upon the past in order to prepare to meet the future. In that way we can continue to grow in the spirit of community. There have been strong feelings in the past that members of the community should be willing to share their talents freely. This is true, and many people have and now continue to share that with us. That is community - all sharing our individual talents and gifts. As we continue to build our community, we learn from our past. We find there are positions of leadership which require special gifts and education. Sometime we may even need to reach outside the community to provide the means to fulfill our need.

Recently we have been faced with the challenge of the need of a paid Director of Religious Education. We have had many dedicated people from the community who have worked extremely hard and given more hours to building our religious education program than we can begin to imagine. Is it time to take another step forward and meet the challenge of providing our children and ourselves with a program directed by a person who has been especially prepared for that? An appropriate person chosen from within or outside the community? Where and what is our decision? What does this decision or lack of it say about us as a faith community? Are we willing to reach into our individual pockets and pay a just wage?

The future of the Catholic church, the role of the professed in religious life, the role of the layperson are changing. We recognize that. This community is even built on that. Are we open to what that could mean to our future as community?

Will a priest coordinator always be available? Should we now start thinking of other options? A brother/priest combination coordinator? A sister/priest combination? A layperson/priest combination? A nonpriest religious/layperson combination?

I am asking a lot of question. I pray that we look to our God for guidance. ... We proclaim our willingness to build a community of love, and to be the holy people God calls us to be.

Marilyn Schwieterman

Tom & Polly Lauer

Tom Lauer
Born:
September 24, 1925
Died:
February 2, 2015

Polly Lauer
Born:
October 1, 1926
Died:
October 4, 2017



Polly & Daughter Kathy




Polly & Daughter Sue



Time with Friends



December 2022

Sun	Mon	Tue	Wed	Thu	Fri	Sat
				1 7:00 PM Leadership Team Meeting 7:30PM Choir Practice	2	3
4 2 nd Sunday of Advent 8:45AM Adult Faith Formation 9:00AM Religious Education 10:30AM Mass (Live Stream Available) Liturgy Planning and Social Justice Meetings after Mass	5	6	7 7:00 PM Mass - Feast of The Immaculate Conception in Si Lounge	8  7:30PM Choir Practice	9	10
11 3 rd Sunday of Advent 9:00AM Religious Education 10:30AM Mass (Live Stream Available)	12	13	14	15 7:30PM Choir Practice	16	17
18 4 th Sunday of Advent 8:45AM Adult Faith Formation 9:00AM Religious Education 10:30AM Mass (Live Stream Available)	19	20	21	22 7:30PM Choir Practice	23	24 Christmas Eve 4:00 PM Mass
25 Christmas Day 	26	27	28	29	30 Feast of The Holy Family 	31 New Year's Eve 